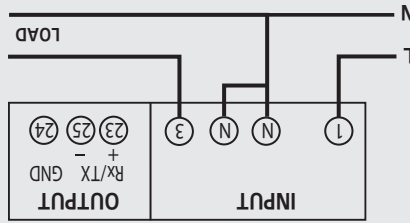
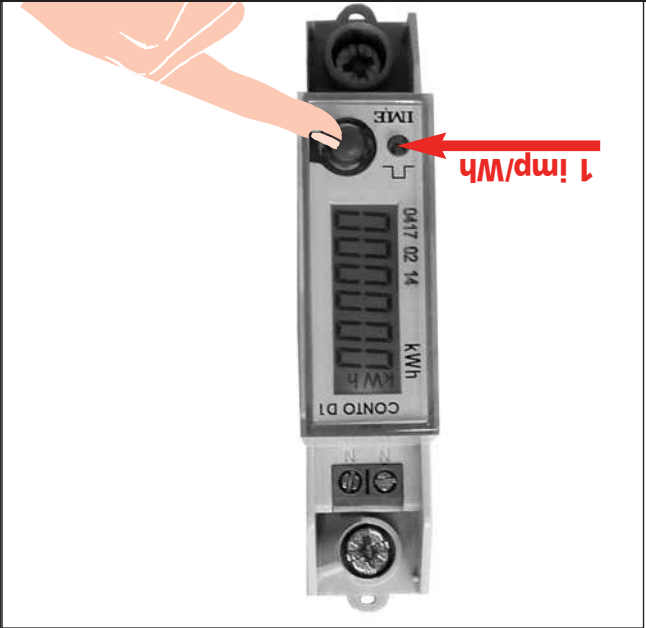


ATTENZIONE! Morsetti 1-3 Min. 6mm²
ATTENZIONE! Terminals 1-3 Min. 6mm²
ACHTUNG! Klemmen 1-3 Min. 6mm²
ATTENZIONE! Bornes 1-3 Min. 6mm²



S 1000/418



Conto D1

10782840



Cod. CE11165A4

IME 

ISTRUMENTI MISURE ELETTRICHE SpA

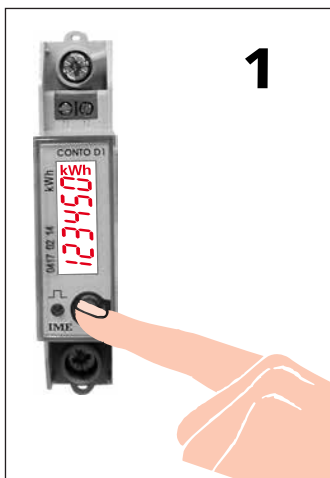
Via Travaglia 7
 20094 CORSICO (MI) ITALIA
 Tel. +39 02 44 878.1



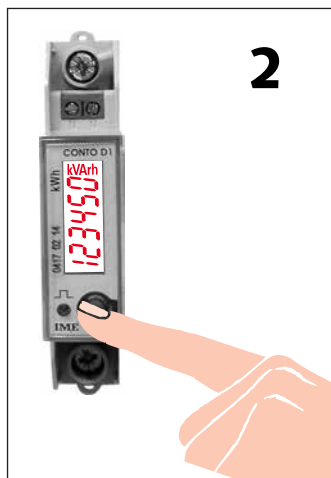
www.imeitaly.com
info@imeitaly.com

VISUALIZZAZIONE

ENERGIA ATTIVA • ACTIVE ENERGY
ENERGIE ACTIVE • WIRKENERGIE

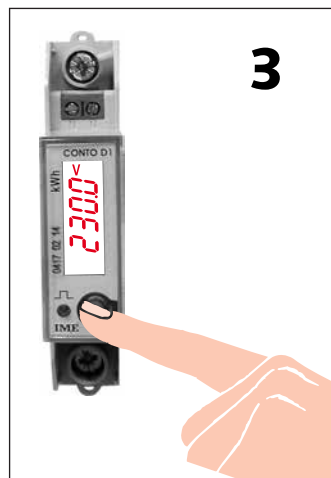


ENERGIA REATTIVA • REACTIVE ENERGY
ENERGIE REACTIVE • BLINDENERGIE



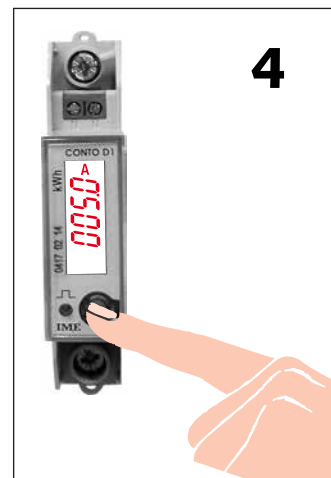
DISPLAY

TENSIONE • VOLTAGE
TENSION • SPANNUNG



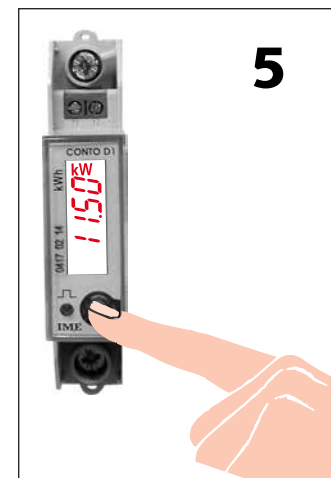
AFFICHAGE

CORRENTE • CURRENT
COURANT • STROM

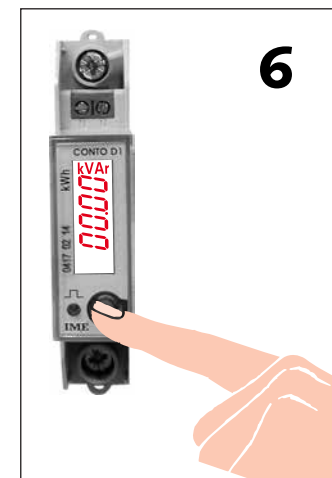


ANZEIGE

POTENZA ATTIVA • ACTIVE POWER
PUISSANCE ACTIVE • WIRKLEISTUNG



POTENZA REATTIVA • REACTIVE POWER
PUISSANCE REACTIVE • BLINDLEISTUNG



Il display visualizza alternativamente le misure disponibili, in modo automatico.
Premendo il tasto frontale è possibile scorrere manualmente le misure.
La retroilluminazione del display si spegne automaticamente dopo alcuni secondi.

Premendo il tasto frontale la retroilluminazione del display si riaccende.

MISURE DISPONIBILI Vedi disegni

Il contatore è dotato di comunicazione RS485 ModBus RTU
I parametri relativi alla comunicazione devono essere programmati
tramite PC e relativo software di programmazione denominato IDM,
scaricabile dal sito www.imeitaly.com nella sezione:

[supporto tecnico/software download/IDM](http://www.imeitaly.com/supporto_tecnico/software_download/IDM)

L'afficheur affiche alternativement et automatiquement les mesures disponibles.

En appuyant sur la touche frontale est possible défilier manuellement les mesures.

L'éclairage par l'arrière de l'afficheur s'éteint automatiquement depuis quelque seconde.

En appuyant sur la touche frontale l'éclairage par l'arrière de l'afficheur se rallume.

MESURES DISPONIBLES Voir dessins

Le compteur a la communication RS485 ModBus RTU.

Les paramètres relatifs à la communication doivent être programmées par PC et relatif logiciel de programmation appelé IDM qui peut être téléchargé du site www.imeitaly.com dans la section:

[supporto tecnico/software download/IDM](http://www.imeitaly.com/supporto_tecnico/software_download/IDM)

The meter alternatively and automatically displays the available measurements.

By pressing the front key, it is possible to manually scroll the measurements.

Display backlighting automatically turns off after some seconds.
By pressing the front key the display backlighting turns on again.

AVAILABLE MEASUREMENTS See drawings

The KWH meter has the RS485 ModBus RTU communication.
The parameters relevant to the communication have to be programmed through personal computer and relevant programming software named IDM which can be downloaded from www.imeitaly.com website in the section: [supporto tecnico/software download/IDM](http://www.imeitaly.com/supporto_tecnico/software_download/IDM)

Die Anzeige zeigt abwechselnd und automatisch die verfügbare Messungen an.

Beim Drücken die Fronttaste, kann man mit der Hand die Messungen blättern.

Die Anzeigehintergrundbeleuchtung schaltet automatisch nach einigen Sekunden aus.

Beim Drücken die Fronttaste, schaltet die Anzeigehintergrundbeleuchtung wieder ein.

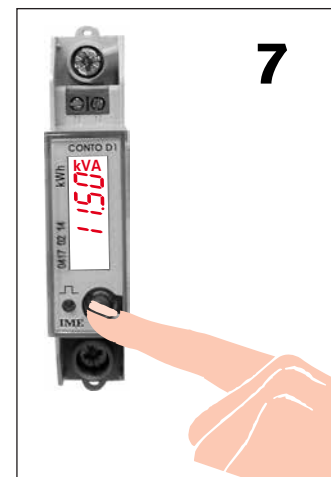
VERFÜGBARE MESSUNGEN Siehe Zeichnungen

Der Zähler hat die RS485 ModBus RTU Kommunikation.

Die Parameter bezüglich auf der Kommunikation müssen durch einen PC und die dazugehörige Programmierungssoftware (IDM bezeichnet) programmiert werden. Diese Programmierungssoftware ist von der Site www.imeitaly.com im Abschnitt:

[supporto tecnico/software download/IDM](http://www.imeitaly.com/supporto_tecnico/software_download/IDM) herunterladbar.

POTENZA APPARENTE • APPARENT POWER
PUISSANCE APPARENTE • SCHEINLEISTUNG



FATTORE DI POTENZA • POWER FACTOR
FACTEUR DE PUISSANCE • LEISTUNGSFAKTOR

