

USCITA IMPULSI

Peso impulsi: 1 imp./Wh
 USCITA: SO secondo EN62053-31, classe A
 Tensione U_{imp} : 12...27Vcc
 Corrente: 10...27mA
 Durata impulso: 70ms

PULSE OUTPUT

Pulse weight: 1 pulse/Wh
 Output: SO according to EN62053-31, class A
 Voltage U_{imp} : 12...27V direct current
 Current: 10...27mA
 Pulse duration: 70ms

SORTIE A IMPULSIONS

Poids impulsions: 1 impulsion/Wh
 Sortie: SO selon EN62053-31, classe A
 Tension U_{imp} : 12...27V courant continu
 Courant: 10...27mA
 Durée d'impulsion: 70ms

IMPULSAUSGANG

Impulsgewicht: 1 Impuls/Wh
 Ausgang: SO nach EN62053-31, Klasse A
 Spannung U_{imp} : 12...27V Gleichstrom
 Strom: 10...27mA
 Impulsdauer: 70ms



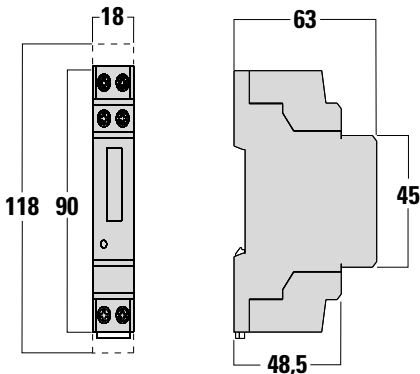
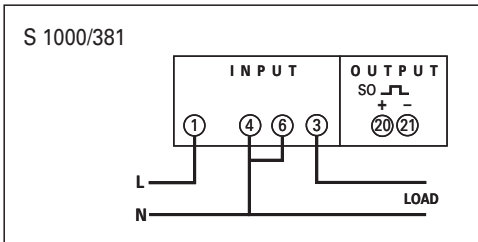
Cod. CE11165A2



ISTRUMENTI MISURE ELETTRICHE SpA

Via Travaglia 7
 20094 CORSICO (MI)
 ITALIA
 Tel. +39 02 44 878.1
 www.imeitaly.com
 info@imeitaly.com

10/12



ATTENZIONE

L'uscita impulsi deve essere alimentata come indicato nello schema!
Rispettare scrupolosamente polarità e modalità di collegamento.

ATTENTION

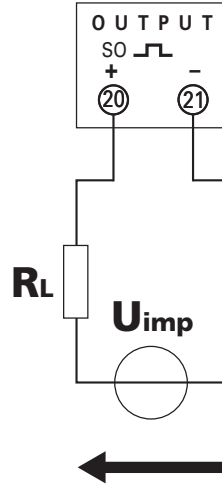
Pulse output must be fed as shown in the wiring diagram!
Scrupulously respect polarities and the connection mode.

ATTENTION

La sortie à impulsions doit être alimenté comme indiqué sur le schéma!
Respecter scrupuleusement les polarités et le mode de branchement.

ACHTUNG

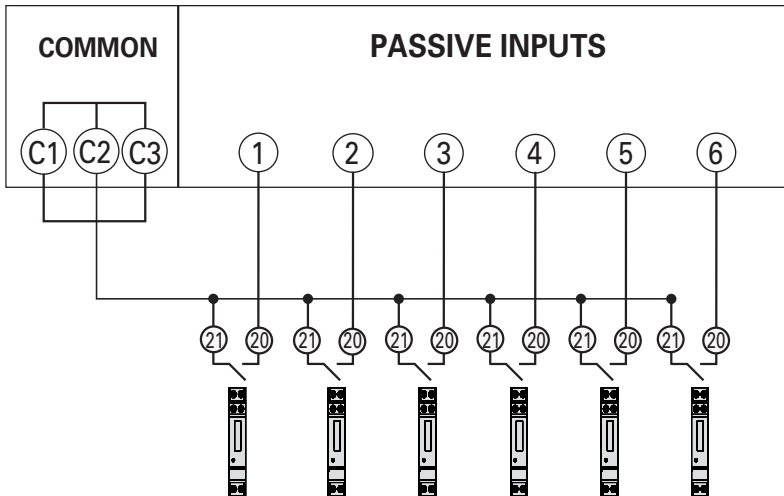
Impulsausgang muss versorgt werden, wie im Schema gezeigt ist.
Bitte die Polaritäten und den Anschlussmodus sorgfältig beachten.



$U_{imp} = 27Vdc$ $R_L \geq 1k\Omega \dots 2,7k\Omega$
 $U_{imp} = 12Vdc$ $R_L \geq 470\Omega \dots 1,2k\Omega$

Collegamento Conto D1 - Conto imp Connection Conto D1 - Conto imp
Branchement Conto D1 - Conto imp Anschlusses Conto D1 - Conto imp

CONTO imp



CONTO D1